

Caps

FLX-CS-PVC/FLX-CF-PVC



Description

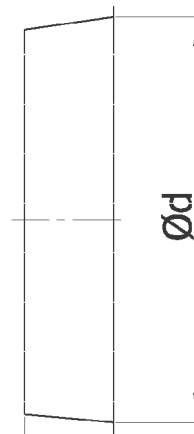
CS-PVC hole plug are dedicated stops for FLX-HDPE and FLX-HDPE-A ducts.
 FLX-CS plugs are made of PVC plastic.

Example

Product code: **CS-PVC - 75**

type _____
 diameter _____

Dimensions



code	d_1 [mm]	d_2 [mm]	L [mm]	aplication
FLX-CS-PVC-63	51	49	20	mounted inside the ducts: FLX-HDPE-63, FLX-HDPE-A-63
FLX-CF-PVC-63	66	63	20	mounted inside the take-offs of plenum boxes FLX-...-63
FLX-CS-PVC-75	63	59	20	mounted inside the ducts: LX-HDPE-75, FLX-HDPE-A-75
FLX-CF-PVC-75	78	78	20	mounted inside the take-offs of plenum boxes FLX-...-75
FLX-CS-PVC-90	76	74	20	mounted inside the ducts: FLX-HDPE-90, FLX-HDPE-A-90
FLX-CF-PVC-90	95	91	20	mounted inside the take-offs of plenum boxes FLX-...-90