

Sleeve couplings **FLX-MSF...**



Description

FLX-MSF sleeve coupling is used to connect FLX-HDPE or FLX-HDPE-A ducts.

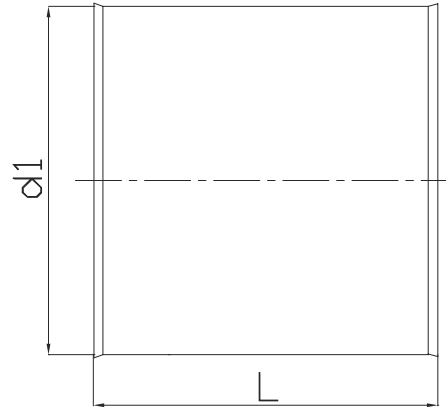
To preserve the tightness class C it is recommended to use gasket FLX-USZ or FLX-USC.

Example

Product code: **FLX-MSF - 75**

type _____
 diameter _____

Dimensions



<i>code</i>	<i>d1</i> [mm]	<i>L</i> [mm]
FLX-MSF-63	63	100
FLX-MSF-75	75	100
FLX-MSF-90	90	100