

Plenum box for connections between intake and exhaust valves and HDPE ductwork **FLX-PLO...**



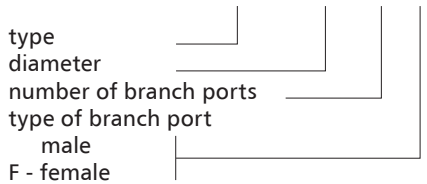
Description

FLX-PLO plenum boxes fit the FLX-HDPE and FLX-HDPE-A ducts to help building an air distribution ductwork in mechanical ventilation systems (including systems with heat recovery). The low profile plenum boxes require less installation space than standard solutions, which is very convenient when they should not be prominent once concealed. This advantage helps free up usable indoor area. The FLX-PLO plenum boxes are made from galvanized steel sheet. Special versions made from stainless steel are available on request. The FLX-PRI is a version of this product with insulation made from 9 mm thick rubber mat installed inside the plenum box. All plenum boxes are fabricated with outward pressure welds. The FLX-PLO plenum boxes have connections sealed with EPDM gaskets. The FLX-HDPE-75 flexible duct connections with the FLX-

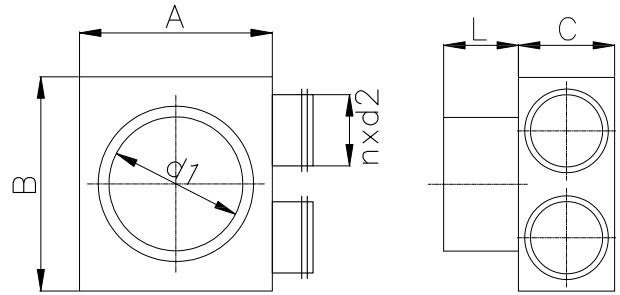
PLO plenum boxes meet **air tightness class C** as per EN 12237. The FLX-PLO branch ports fit the FLX-CF-PVC-63 end caps.

Product code example

Product code **FLX-PLO - 75 - 2 F**



Dimensions



Product code	A (mm)	B (mm)	C (mm)	L (mm)	d ₁ (mm)	n (pcs)	d ₂ (mm)
FLX-PLO-75-2-F	180	200	90	60	125	2	63
FLX-PLO-75-3-F	180	300	90	60	125	3	63

The 63 mm connector with the gasket provides a male connection for the FLX-HDPE-75 with 63 mm I.D.

If you need a plenum box with a non-standard branch port size suitable for SPIRAL ducts, add the following size symbol to the product code being ordered:

- A — 100 mm D — 160 mm H — 080 mm
- B — 125 mm E — 200 mm J — 180 mm
- C — 150 mm G — 250 mm

e.g. FLX-PLO-75-2-A